

- “Applaudable Difference” Designs
 - Meticulous Engineering
 - “Sub-Lux” Price Points
 - Hands-on Operation
-



www.paulduancreations.com

Milano Alu. Lounge Chair (Make-to-Order)



- Dimensions: **W 32" D 31.75" H 41.5"**
- Seat Dimensions **H 13" W 24" D 21"**
- Arm Dimensions **W 4" H 23"**
- Packaging **2pcs/box**
- Net Weight **29 lbs.**
- Materials: **Alu., / Outdoor Wicker & Quick-dry Foam**
- Stacks **N/A**
- Assembly **No**



- V#1: Replaceable, reticulated outdoor wicker seat.
- V#2: Alu. Seat Comfortable with/without cushions
- Customizable Laser-cut Piercing Pattern
- Double Layer Powder Coating, Nylon Foot Glides
- 350 lbs. weight capacity
- 5-yr Structural Warranty

Adriano Aluminum Dining Chair



ADR01-WW

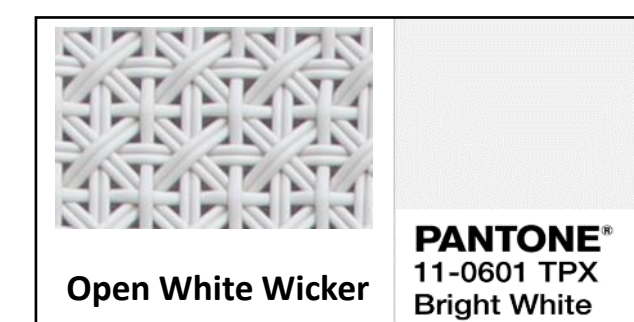
▪ Dimensions	W 22"	D 24"	H 33"
▪ Seat Dimensions	H 17"	W 19"	D 17.5"
▪ Packaging	2pcs/carton		
▪ Net Weight	13.2 lbs		
▪ Materials:	Alu / synthetic wicker		
▪ Stacks	N/A		
▪ Assembly	With 4 Generic bolts		



- Patented, Off-white Outdoor Wicker
- Reinforced seat structure, 350 lbs. weight capacity
- Dummy-Proof hole pattern assembly
- Nylon, replaceable Foot Glides
- Double Layer Powder Coating
- 3-yr Structural Warranty, 1-yr wicker Warranty

www.paulduancreations.com
Crafted Minimalism

In Stock colors:



Sorrento Aluminum Dining Chair and Stools



Matte White
SRT01-W



Silver Grey
SRT01-S



Bar Stool
SRT03



Counter Stool
SRT04

Make-to-order

Dining Chair:

▪ Dimensions	W 23.5"	D 25"	H 34.75"
▪ Seat	H 17.5"	W 17.25"	D 18.5"
▪ Arm Height	25.75"		
▪ Net Weight	13.3 lbs		

Bar Stool:

▪ Dimensions	W 20.5"	D 25"	H 43.5"
▪ Seat	H 30"	W 17.25"	D 15"
▪ Arm Height	N/A		
▪ Net Weight	14 lbs		

Counter Stool:

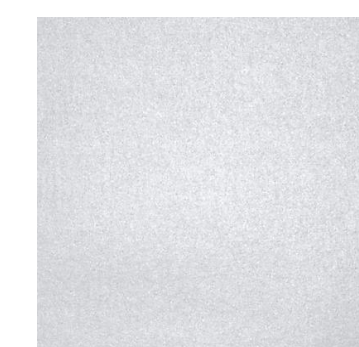
▪ Dimensions	W 20.5"	D 25"	H 37.5"
▪ Seat	H 24"	W 17.25"	D 15"
▪ Arm Height	N/A		
▪ Net Weight	13.5 lbs		



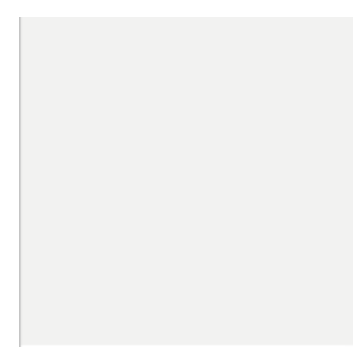
www.paulduancreations.com
Crafted Minimalism

- Solid aluminum arms
- Concealed / clean welding structure on slats
- Soft-corner construction
- Nylon, Angle-Specific Foot Glides / Stacking Spacers
- Double Layer Powder Coating
- 3-yr Structural Warranty, 350 lbs Weight Capacity
- Stacks 6

In Stock colors:



Silver Grey



PANTONE®
11-0601 TPX
Bright White

Bishop Aluminum Dining Chair and Bar Stool



Silver
Grey/Charcoal
alu seat
(BSP01-S)



White/natural
reticulated
wicker
(BSP03-WW)



Silver
Grey/Charcoal
alu seat
(BSP02-S)



White/natural
reticulated
wicker
(BSP02-WW)

Make-to-order

Dining Chair:

▪ Dimensions	W 22"	D 23.5"	H 33.75"
▪ Seat	H 17"	W 17"	D 20.5"
▪ Arm Height	25"		
▪ Net Weight	11.3 lbs (Aluminum Seat) 10 lbs (Padded Wicker seat)		

Bar Stool:

▪ Dimensions	W 19"	D 23.5"	H 43"
▪ Seat	H 30"	W 17"	D 19"
▪ Arm Height	N/A		
▪ Net Weight	14.7 lbs (Aluminum Seat) 13 lbs (Padded Wicker seat)		



www.paulduancreations.com
Crafted Minimalism

- Replaceable, Quick-dry-foam padded Outdoor wicker seat
- Sheet Aluminum Seat with slot drain holes
- Soft-corner construction
- Nylon Foot Glides / Stacking Spacers
- Double Layer Powder Coating, 350 lbs weight capacity
- 3-yr Structural Warranty, 1-yr wicker Warranty
- Stacks 6

In Stock colors:



Genoa Aluminum Dining Armchair



Silver Grey
GNA01-S



White with wicker seat
GNA03-WW



Mustard Yellow
GNA01-Y

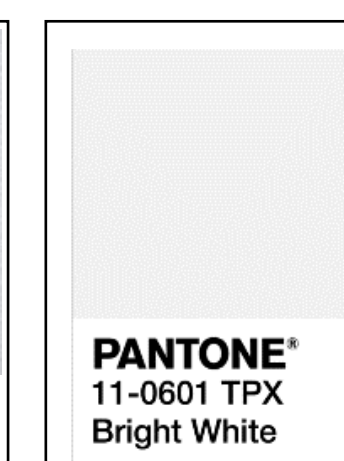
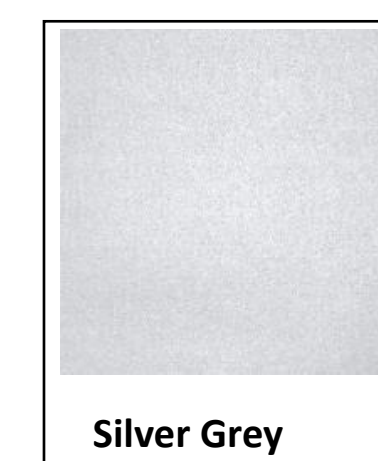
- | | | | |
|-------------------|--------------------------------------|--------------|----------------|
| ▪ Dimensions: | W 22.9" | D 22" | H 32" |
| ▪ Seat Dimensions | H 17" | W 17" | D 19.5" |
| ▪ Arm Height: | 25" | | |
| ▪ Packaging | Pallet | | |
| ▪ Net Weight | 9.26 lbs | | |
| ▪ Materials: | Alu / padded synthetic wicker | | |
| ▪ Stacks | 8 | | |



www.paulduancreations.com
Crafted Minimalism

- Replaceable, Quick-dry-foam padded Outdoor wicker seat
- Sheet Aluminum Seat with slot drain holes
- Concealed Welding construction
- Nylon Foot Glides / Stacking Spacers
- Double Layer Powder Coating, 350 lbs Weight Capacity
- 3-yr Structural Warranty, 1-yr wicker Warranty

In Stock colors:



Genoa Aluminum Short-arm Dining Chair and Bar Stool

(Make to Order)



▪ Dining Chair Dimensions	W 22.5"	D 22"	H 32"
▪ Seat Dimensions	H 17"	W 17"	D 19.5"
▪ Arm Height:	26"		
▪ Net Weight	9 lbs		
▪ Stacks	6		
▪ Bar Stool Dimensions	W 22.9"	D 22"	H 43"
▪ Seat Dimensions	H 30"	W 17"	D 19.5"
▪ Arm Height:	26"		
▪ Net Weight	10.75 lbs		
▪ Stacks	6		



- Sheet Aluminum with Slot Holes
- Concealed Welding Construction
- Nylon Foot Glides / Stacking Spacers
- Double Layer Powder Coating, 350 lbs weight capacity
- 3-yr Structural Warranty
- Custom Color Available with 100 pcs MOQ

Make to order colors:



Corsica Stamped Steel Dining Chair & Bar Stool



▪ Dining Chair Dimensions	W 24.75"	D 24.25"	H 32"
▪ Seat Dimensions	H 17"	W 17"	D 21.25"
▪ Net Weight	12.2 lbs		
▪ Stacks	6		
▪ Bar Stool Dimensions	W 24.75"	D 24.25"	H 43.5"
▪ Seat Dimensions	H 30"	W 17"	D 21.25"
▪ Net Weight	18 lbs		
▪ Stacks	6		

In Stock colors:



- Barrel Back for extra comfort while armless for ease of access
- Pierced Pattern Steel Sheet
- E-Coat + Double Layer Powder Coating
- Nylon Foot Glides / Stacking Spacers
- Double Layer Powder Coating, 350 lbs weight capacity
- 3-yr Structural Warranty

www.paulduancreations.com
Crafted Minimalism



Aegean Micro-Mesh Steel Dining Chairs



Silver Grey mesh
AGN01-S



Silver Grey with white
Reticulated wicker seat
AGN03-SW

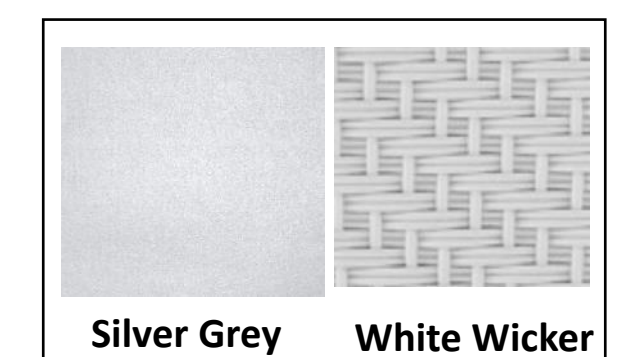
- Dimensions: W 22.88" D 21.75" H 33.5"
- Seat Dimensions H 17" W 17" D 21.25"
- Arm Height: 26"
- Weight: 15 lbs (Mesh Seat)
17.8 lbs (Padded Wicker Seat)
- Stacks: 6

In Stock colors:



www.paulduancreations.com
Crafted Minimalism

- **Heavy Weight – ideal for windy Installations**
- Replaceable, Quick-dry-foam padded Outdoor Off-white wicker seat
- Micro-Mesh Seat – Comfortable for Summer seating
- E-Coat + Double Layer Powder Coating
- Nylon Foot Glides / Stacking Spacers
- 350 lbs weight capacity
- 3-yr Structural Warranty, 1-yr wicker Warranty



Como Micro-Mesh Steel Dining Chair & Bar Stool



Silver Grey
CMM01-S

White
CMM01-W

Silver Grey
bar stool
CMM02-S

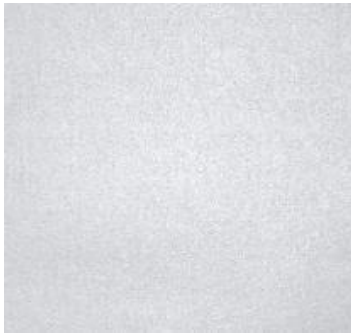
- Dining Chair Dimensions W 22.5" D 24 H 32"
- Seat Dimensions: H 17" W 17.25" D 19"
- Net Weight 14.5 lbs
- Stacks 6

- Bar Stool Dimensions W 22.5" D 24 H 45.5"
- Seat Dimensions: H 30" W 17.25" D 19"
- Net Weight 20 lbs
- Stacks 6

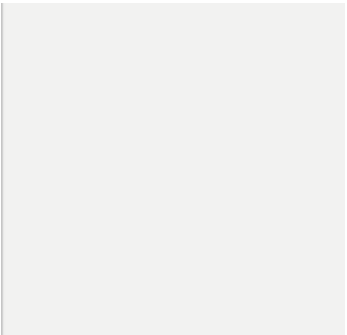


- Micro-Mesh Seat – Comfortable for Summer seating
- E-Coat + Double Layer Powder Coating
- Nylon Foot Glides / Stacking Spacers
- 350 lbs weight capacity
- 3-yr Structural Warranty

In Stock colors:



Silver Grey



PANTONE®
11-0601 TPX
Bright White

Amsterdam Indoor/Outdoor Chair and Bar Stool



(AMS02-BL)



(AMS01-BL)

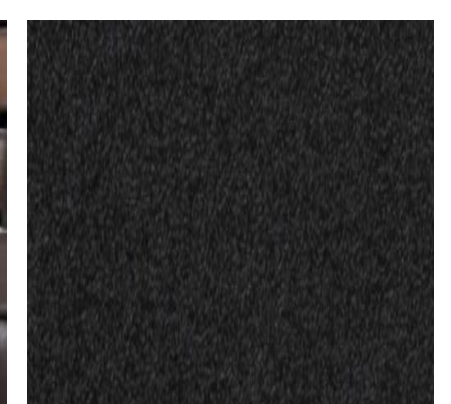
Make-to-order

- Dimensions: (ST) **W 24.75"** **D 24.5"** **H 44"**
- Dimensions: (CH) **W 24.75"** **D 22.8"** **H 31.5"**
- Seat Dimensions **H 30.5"** **W 18.5"** **D 17.5"**
- Packaging **2pcs/box**
- Net Weight **17 lbs**
- Materials: **Steel tube / faux leather straps**
- Stacks **N/A**
- Assembly **4 Generic Bolts**

In Stock colors:



Faux leather Strap



Textured black



- Indoor/Outdoor with Patented Faux Leather Straps
- E-Coat + Double Layer Powder Coating
- Nylon Foot Glides, Stool with Purse Hook
- 350 lbs weight capacity
- 3-yr Structural Warranty, 1-yr Strap Warranty
- Dummy-Proof Assembly

Steel Top Dining Tables



30"x 30" steel top
(Silver Grey Top)
Full Table

SDT3030-SC



30"x 24" steel top
(Silver Grey Top)
+ Charcoal Base

ST3024-S + STB01-C



30"x 30" steel top
(Silver Grey Top)
+ Charcoal Base

ST3030-S + STB01-C

▪ Dimensions	W 30" D 30" H 28.5"
▪ Top Material	Steel Sheet – Silver Grey
▪ Base Material	Steel – Charcoal Grey
▪ Packaging	1 Table / box
▪ Net Wgt.	26.45 lbs
▪ Assembly	With Generic Bolts

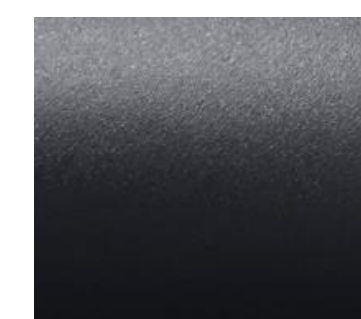
W 30" D 24" H 28.5"
Steel Sheet – Silver Grey
Steel – Charcoal Grey
Top Box + Base Box
45.9 lbs
With Generic Bolts

W 30" D 30" H 28.5"
Steel Sheet – Silver Grey
Steel – Charcoal Grey
Top Box + Base Box
50.7 lbs
With Generic Bolts

In Stock colors:



- Sound-Deafening Treatment for Sheet Metal
- E-Coat + Double Layer Powder Coating
- Nylon adjustable Foot Glides
- 3-yr Structural Warranty
- Purse Hooks on Pedestal Bases



Charcoal Grey



Silver Grey

Aluminum Top Dining Tables



30"x30" Solid alu top
(White Top)
+ Charcoal Base

AT3030-W + STB01-C



30"x30" Solid alu top
(Silver Grey Top)
+ Charcoal Base

AT3030-S + STB01-C



38"x38" Alu Slats Table
(White)

ADT3838-W



38"x38" Alu Slats Table
(Silver Grey)

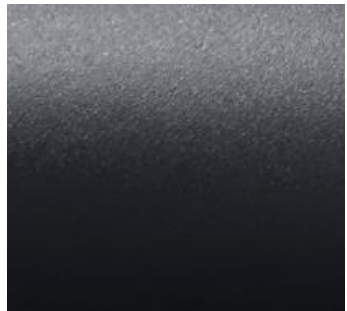
ADT3838-S

▪ Dimensions	W 30" D 30" H 28.5"	W 30" D 24" H 28.5"	W 38" D 38" H 28.5"	W 38" D 38" H 28.5"
▪ Top Material	Solid Aluminum - White	Solid Aluminum – Silver Grey	Aluminum Slats - White	Aluminum Slats – Silver Grey
▪ Base Material	Steel – Charcoal Grey	Steel – Charcoal Grey	Aluminum Tubes - White	Aluminum Tubes – Silver Grey
▪ Packaging	Top Box + Base Box	Top Box + Base Box	1 Table / Box	1 Table / Box
▪ Net Wgt.	55.6 lbs	55.6 lbs	31 lbs	31 lbs
▪ Assembly	With Generic Bolts	With Generic Bolts	With Generic Bolts	With Generic Bolts
▪ Others	Purse Hooks	Purse Hooks	Perspective Distortion Correction	Perspective Distortion Correction

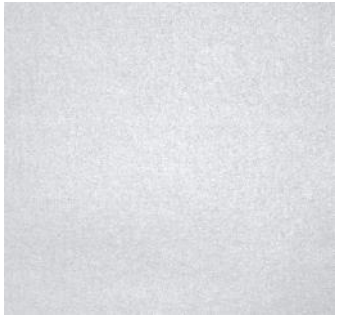


- E-Coat + Double Layer Powder Coating
- Nylon adjustable Foot Glides
- 3-yr Structural Warranty
- Purse Hooks on Pedestal Bases
- Dummy-Proof Assembly with Generic Bolts

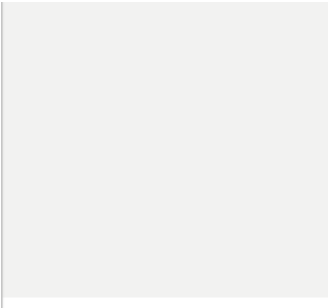
In Stock colors:



Charcoal Grey



Silver Grey



PANTONE®
11-0601 TPX
Bright White

Steel/Aluminum Top Bar Tables



30"x 24" steel top
(Silver Grey Top)
+ Charcoal Bar Ht Base

ST3024-S + STB02-C



30"x 30" steel top
(Silver Grey Top)
+ Charcoal Bar Ht Base

ST3030-S + STB02-C



30"x30" Solid alu top
(White Top)
+ Charcoal Bar Ht Base

AT3030-W + STB02-C



30"x30" Solid alu top
(Silver Grey Top)
+ Charcoal Bar Ht Base

AT3030-S + STB02-C

- **Dimensions**
- **Top Material**
- **Base Material**
- **Packaging**
- **Net Wgt**
- **Assembly**

W 30" D 24" H 42"
Steel Sheet –Silver Grey
Steel
Top Box + Base Box
47.66 lbs
With Generic Bolts

W 30" D 30" H 42"
Steel Sheet –Silver Grey
Steel
Top Box + Base Box
52.46 lbs
With Generic Bolts

W 30" D 30" H 42"
Solid Aluminum - White
Steel
Top Box + Base Box
57.36 lbs
With Generic Bolts

W 30" D 30" H 42"
Solid Aluminum – Silver Grey
Steel
Top Box + Base Box
57.36 lbs
With Generic Bolts



www.paulduancreations.com
Crafted Minimalism

- Sound-Deafening Treatment for Steel Sheet Metal
- 8mm thick for Solid Alu Tops
- E-Coat + Double Layer Powder Coating
- Nylon adjustable Foot Glides
- 3-yr Structural Warranty
- Purse Hooks
- Dummy-Proof Assembly with Generic Bolts

In Stock colors:



Tables Summary – Other Sizes

(Make-to-Order)



48" Alu Round Dining (ADA)



72"x42" Alu Dining (ADA)



84"x42" Alu Dining

More sizes and
shapes Available
with MOQ,
Contact Sales



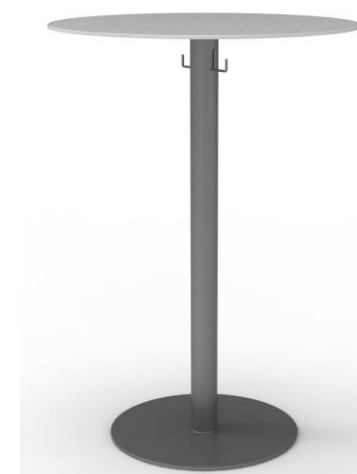
40" Alu Round Dining



40" Alu Round Bar



30" Alu Top Dining



30" Alu Top Bar



48"x30" Dining (ADA)



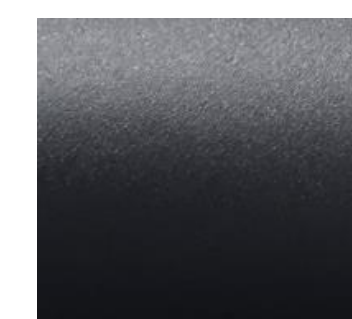
18" Dia. 18" H
Alu End table



www.paulduancreations.com
Crafted Minimalism

- MOQ = 20 pcs each (+premium charges)
- Custom Color MOQ = 50-200 pcs
- Leadtime: 12-14 weeks (please confirm with sales)

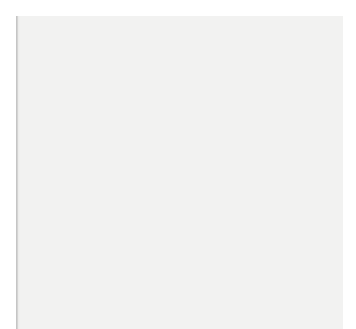
In Stock colors:



Charcoal Grey



Silver Grey



PANTONE®
11-0601 TPX
Bright White

Some PDC's Quality & Functionality Call-outs

Commercial Seating
Capacity
350 lbs.



**UL4041 Internal
Factory Testing
Compliance**

PDC's 3-layer Coating for all steel frames

steel tube
e-coating
first time powder coating
second time powder coating



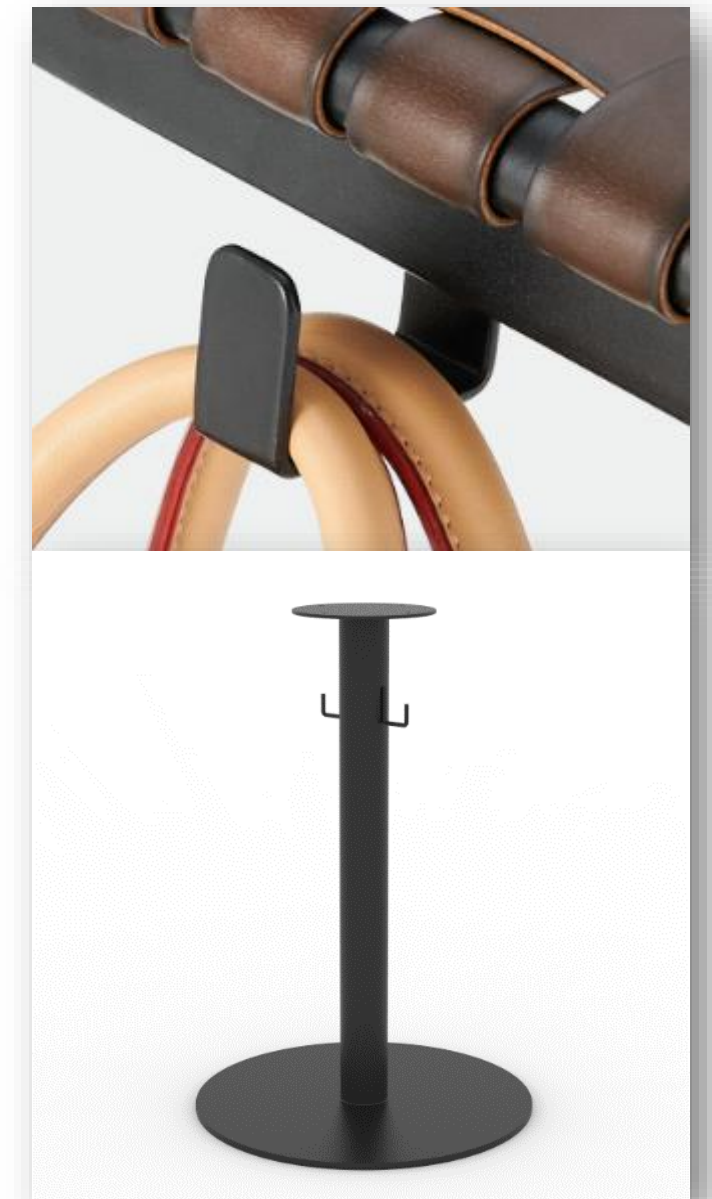
Our Triple-layer coating:
E-Coat + 2 times powder coat
dramatically improves powder
adhesiveness
Total thickness **250-350um**

Other brands

steel tube
e-coating
first time powder coating



Regular steel frame
E-coat + powder coat
Total thickness **80-120um**



All bar stools and pedestal
bases have purse hooks!



One-Size Generic Bolt
Across the Brand



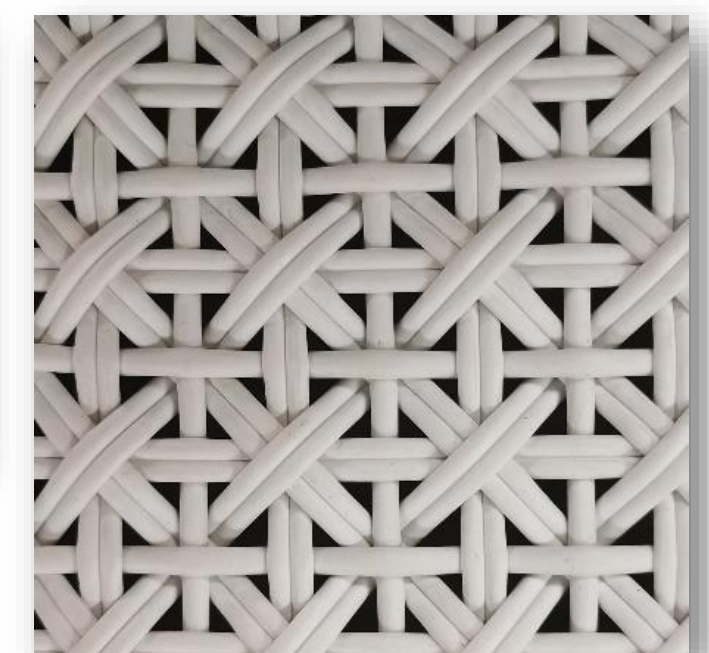
All Table feet are adjustable



All tubes are at/beyond
specialty level (2.0mm gauge
on Como steel tube)



All foot glides are Nylon with
10mm solid meat for wear & tear



All Wickers are Patented
3,000+ hr. UV Outdoor PE



PDC's Warranty & Service Call-outs

3-year Commercial Structural Warranty

1- year Commercial wicker Warranty

(and yet all wicker parts are replaceable at low shipping costs)

2-5 day lead-time for Drop ship on in-stock items

Warehouse with 8-year experience handling patio furniture packaging & fulfillment

Photos available for each shipment shipping out

Insurance covered for merchandise during transportation

*Realistic 3-D rendering available to help buying decision

*Complimentary Photography to promote your business by Paul

For full terms and conditions refer to PDC website:

<https://www.paulduancreations.com/shipping-terms-conditions>

For full warranty info refer to PDC website:

<https://www.paulduancreations.com/product-care-and-warranty>



* For qualified projects

FAQs

What's the **lead time** if inventory runs out and MOQ for special orders at factory level?

-PDC replenishment orders are always at work before inventory runs dry. For specific orders needing brand new production runs - roughly 4 months depending on seasonality.

Are there **matching cushions** to go with the chairs?

-All chairs are design to sit right without cushions. However, to avoid extreme temperature on body - we have a cushion facility making specialty cushions with Sunbrella fabric IN STOCK. MOQ 24 same cushions. COM accepted.

Are **custom finishes** available? How about custom **new models**?

-Custom Finishes: MOQ 100-150 chairs, or 20-200 tables depending on size.

-Custom Models: MOQ 300-500 frames

Is there any **minimum purchase** qty?

-4 units per stacking chair models. Orders fewer than 12 units will trigger a \$100 small order fee. See pricelist details.

What's the delivery **freight**?

-Freight fluctuate greatly. However, as most chairs stack, freight rarely come above 15% of product value nationally.

What's the **payment terms**?

-Full upfront. Special orders will need 50% down. Credit cards with 3.5% banking charge.

Can I use my **own carrier? Will-calls?**

-Yes. Will-calls available too.

How are products **packed** for shipment?

-Most chairs stacked on pallets before protection and wrapping. Multiple boxed will also be palletized.

Are **CAD or 3D drawings** available?

-Yes, upon request & verification.

