

Standard Steel Top Dining Tables



30"x 30" steel top
(Silver Grey Top)
Full Table

SDT3030-SC



30"x 24" steel top
(Silver Grey Top)
+ Charcoal Base

ST3024-S + STB01-C



30"x 30" steel top
(Silver Grey Top)
+ Charcoal Base

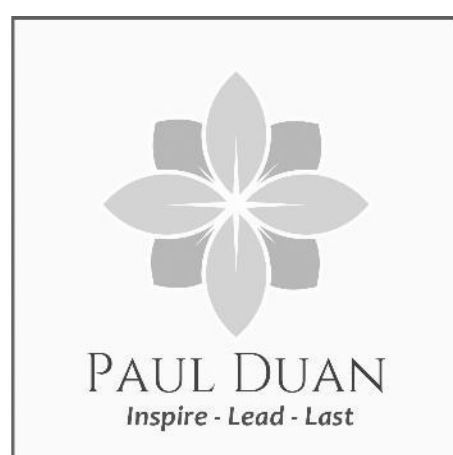
ST3030-S + STB01-C

▪ Dimensions	W 30" D 30" H 28.5"
▪ Top Material	Steel Sheet – Silver Grey
▪ Base Material	Steel – Charcoal Grey
▪ Packaging	1 Table / box
▪ Net Wgt.	26.45 lbs
▪ Assembly	With Generic Bolts

▪ Dimensions	W 30" D 24" H 28.5"
▪ Top Material	Steel Sheet – Silver Grey
▪ Base Material	Steel – Charcoal Grey
▪ Packaging	Top Box + Base Box
▪ Net Wgt.	45.9 lbs
▪ Assembly	With Generic Bolts

▪ Dimensions	W 30" D 30" H 28.5"
▪ Top Material	Steel Sheet – Silver Grey
▪ Base Material	Steel – Charcoal Grey
▪ Packaging	Top Box + Base Box
▪ Net Wgt.	50.7 lbs
▪ Assembly	With Generic Bolts

In Stock colors:



- Sound-Deafening Treatment for Sheet Metal
- E-Coat + Double Layer Powder Coating
- Nylon adjustable Foot Glides
- 3-yr Structural Warranty
- Purse Hooks on Pedestal Bases



Standard Aluminum Top Dining Tables



30"x30" Solid alu top
(White Top)
+ Charcoal Base

AT3030-W + STB01-C



30"x30" Solid alu top
(Silver Grey Top)
+ Charcoal Base

AT3030-S + STB01-C



38"x38" Alu Slats Table
(White) – ADA Compliant

ADT3838-W



38"x38" Alu Slats Table
(Silver Grey) – ADA Compliant

ADT3838-S

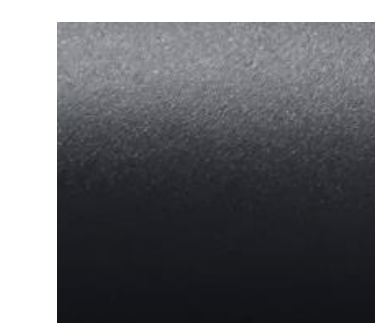


▪ Dimensions	W 30" D 30" H 28.5"	W 30" D 30" H 28.5"	W 38" D 38" H 28.5"	W 38" D 38" H 28.5"
▪ Top Material	Solid Aluminum - White	Solid Aluminum – Silver Grey	Aluminum Slats - White	Aluminum Slats – Silver Grey
▪ Base Material	Steel – Charcoal Grey	Steel – Charcoal Grey	Aluminum Tubes - White	Aluminum Tubes – Silver Grey
▪ Packaging	Top Box + Base Box	Top Box + Base Box	1 Table / Box	1 Table / Box
▪ Net Wgt.	55.6 lbs	55.6 lbs	30 lbs	30 lbs
▪ Assembly	With Generic Bolts	With Generic Bolts	Yes	Yes
▪ Others	Purse Hooks	Purse Hooks	With Umbrella Hole + Alu. Cover	With Umbrella Hole + Alu. Cover

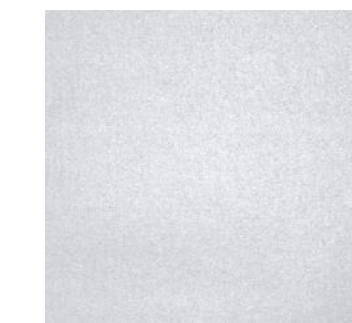


- E-Coat (for steel) + Double Layer Powder Coating
- Nylon adjustable Foot Glides
- 3-yr Structural Warranty
- Purse Hooks on Pedestal Bases
- Dummy-Proof Assembly with Generic Bolts

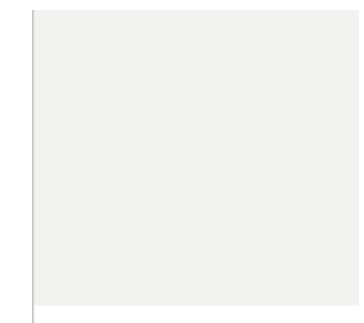
In Stock colors:



Charcoal Grey



Silver Grey



PANTONE®
11-0601 TPX
Bright White

Standard Steel/Aluminum Top Bar Tables



30"x 24" steel top
(Silver Grey Top)
+ Charcoal Bar Ht Base

ST3024-S + STB02-C



30"x 30" steel top
(Silver Grey Top)
+ Charcoal Bar Ht Base

ST3030-S + STB02-C



30"x30" Solid alu top
(White Top)
+ Charcoal Bar Ht Base

AT3030-W + STB02-C



30"x30" Solid alu top
(Silver Grey Top)
+ Charcoal Bar Ht Base

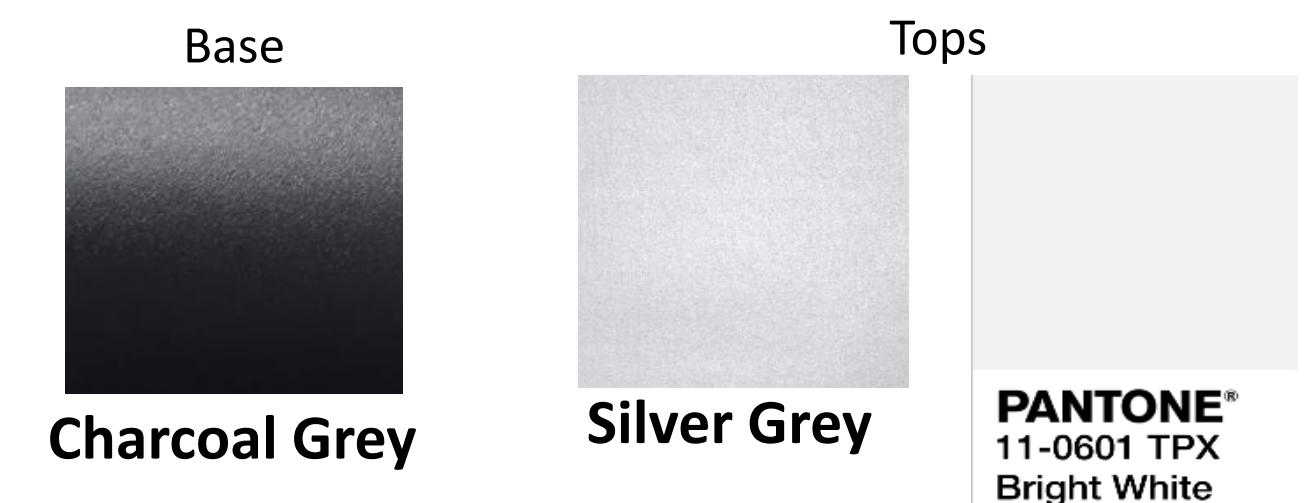
AT3030-S + STB02-C

▪ Dimensions	W 30" D 24" H 42"	W 30" D 30" H 42"	W 30" D 30" H 42"	W 30" D 30" H 42"
▪ Top Material	Steel Sheet –Silver Grey	Steel Sheet –Silver Grey	Solid Aluminum - White	Solid Aluminum – Silver Grey
▪ Base Material	Steel	Steel	Steel	Steel
▪ Packaging	Top Box + Base Box	Top Box + Base Box	Top Box + Base Box	Top Box + Base Box
▪ Net Wgt	47.66 lbs	52.46 lbs	57.36 lbs	57.36 lbs
▪ Assembly	With Generic Bolts	With Generic Bolts	With Generic Bolts	With Generic Bolts



- Sound-Deafening Treatment for Steel Sheet Metal
- 8mm thick for Solid Alu Tops
- E-Coat + Double Layer Powder Coating
- Nylon adjustable Foot Glides
- 3-yr Structural Warranty
- Purse Hooks
- Dummy-Proof Assembly with Generic Bolts

In Stock colors:



Make to Order Tables



48"-60" Alu Round Dining
(ADA from 50" Dia. up)



72"x42" Alu Dining (ADA)



84"x42" Alu Dining

More sizes and shapes
Available with MOQ,
Contact Sales for Details



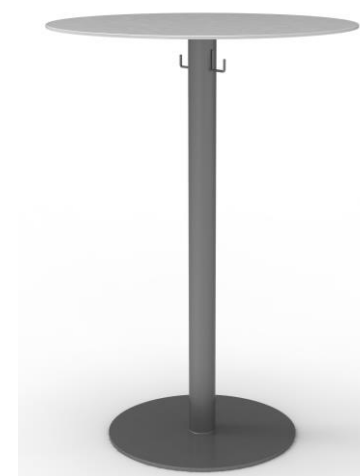
40" Alu Round Dining



40" Alu Round Bar



30" Alu Top Dining



30" Alu Top Bar



48"x30" Dining (ADA)



18" Dia. 18" H
Alu End table

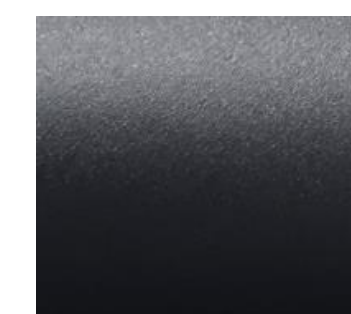


18" Dia. 18" H
Alu End table
Custom color base



- MOQ = 20 pcs each (+premium charges)
- Custom Color MOQ = 50-200 pcs
- Leadtime: 12-14 weeks (please confirm with sales)

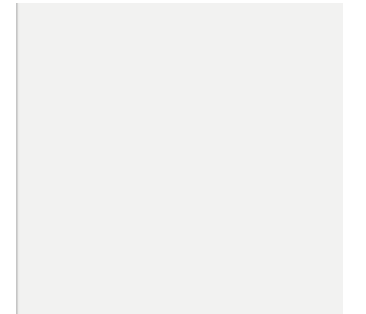
In Stock colors:



Charcoal Grey



Silver Grey



PANTONE®
11-0601 TPX
Bright White