

2022 Spring New Introduction - Sorrento Alu Arm Chair

Designed by: Paul Duan



Recognized as No. 4 for 2022 HD Expo "Debut Standouts", No. 1 in furniture.
-Hospitality Magazine, Feb/Mar 2022



Matte White
SRT01-W



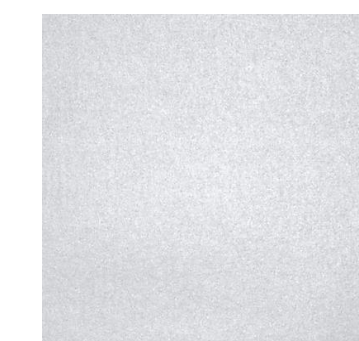
Silver Grey
SRT01-S

- | | | | |
|--------------------|-----------------|--------------|----------------|
| ▪ Dimensions: | W 22.9" | D 22" | H 32" |
| ▪ Seat Dimensions: | H 17" | W 17" | D 19.5" |
| ▪ Arm Height: | 25" | | |
| ▪ Packaging | Pallet | | |
| ▪ Seating capacity | 350 lbs | | |
| ▪ Net Wgt (piece) | 13.3 lbs | | |
| ▪ Gross Wgt (pack) | N/A | | |
| ▪ Materials: | Alu | | |
| ▪ Stackability | 10 | | |
| ▪ Assembly | No | | |
| ▪ Warranty | 3 yrs | | |

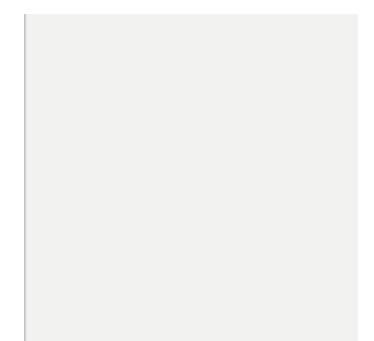


- 1/3" thickness Solid alu arms with special alloy
- Boat-shaped leg tubes with 0.080" structural tube walls
- Tapered & Ergonomic seating bucket
- Nylon Foot Glides

Anticipated In Stock colors:



Silver Grey



PANTONE®
11-0601 TPX
Bright White